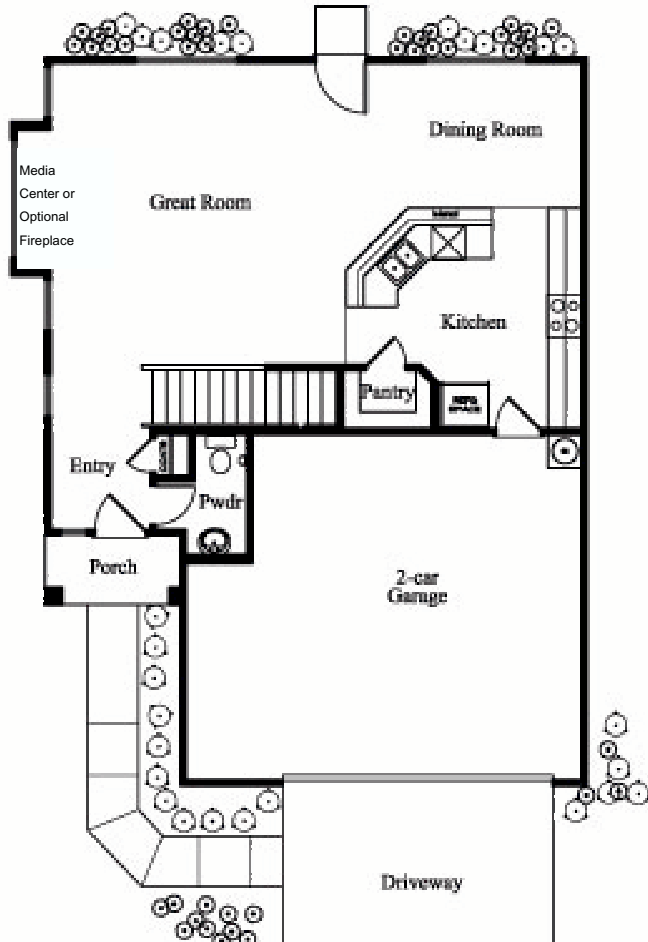




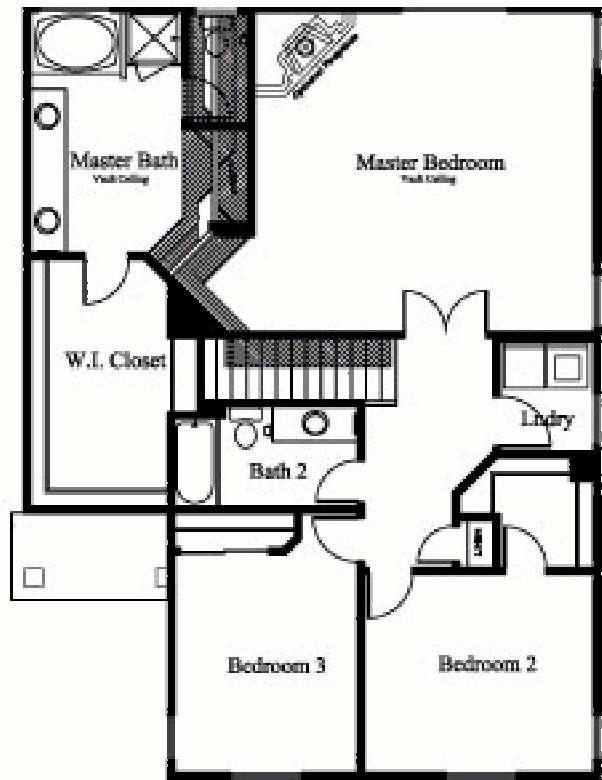
PALMS BAY



First Floor

3 Bedrooms
 2 ½ Bathrooms
 2 Car Garage

2,033 Square Feet



Second Floor



RHODES
 HOMES

www.RhodesHomes.com

Preliminary Information Dated August 1, 2005

In a continuous effort by Rhodes Homes to improve the quality of your home, we reserve the right to change promotional offers, features, prices, plans and specifications without notice. Significant changes may be made during or after the construction of the model homes. Rhodes Homes reserves the right to modify, relocate or eliminate any or all of the features, specifications, plan utilities, design or shape thereof, all without notice or obligation to any purchaser. Price range reflects base price only and lot premiums may apply. Other restrictions may apply. Additional association fees may apply. Other fees may also apply. All square footages are approximate square footages of the total livable space. Please see your onsite sales associate for complete details. Primary resident buyers only.

